

# Eight Steps to Set-Up LiquaVision®

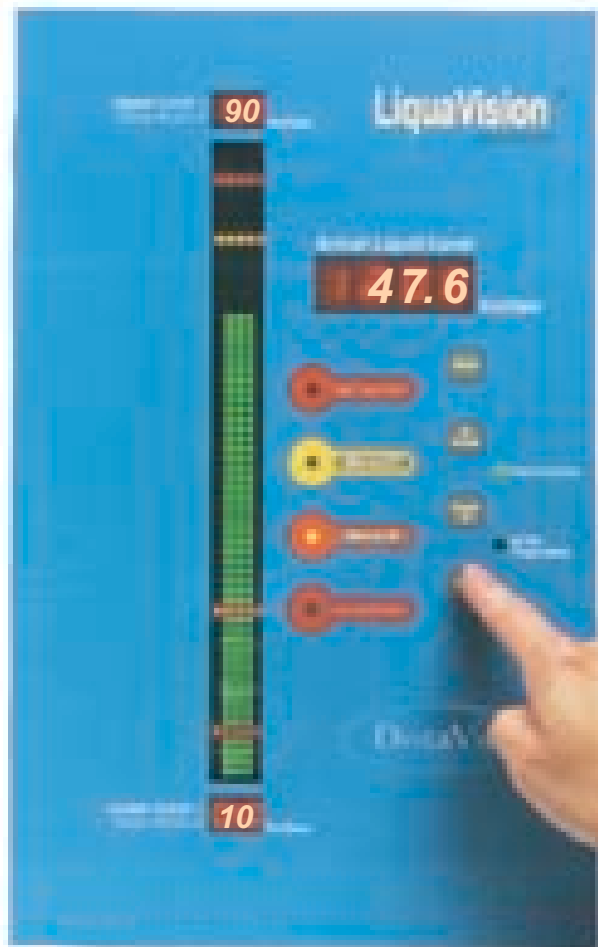
## Make Up Model

Let's say your **tank is 100 inches deep**, and the transducer you're using has a manufacturer's range of 0-150 inches of water column (INWC). The level sensor or end of the bubbler tube is located 10 inches off the bottom of the tank. With 15 inches of water in the tank you are cavitating the pump, and at 80 inches of water you are facing probable flooding. **Your goal is to maintain a liquid level between 40 and 65 inches using LiquaVision.**

Taking the following steps while programming LiquaVision will maintain the range of **liquid between 40 and 65 inches**. **High Alarm output** circuit will be activated at **75 inches** and the **Low Alarm** will be activated at **25 inches**. The cross-section "window" into your tank that is displayed in the vertical Bar Graph will be from **10 to 90 inches**.

NOTE: Be sure DIP # 1 is ON to unlock the programming security feature.

- 1 Press SELECT; see **RANG** displayed, followed by a flashing **R\_\_**; enter **150** inches for **Transducer Range** by using the INCREASE / DECREASE buttons.  
*This is the manufacturer setting printed on the transducer*
- 2 Press SELECT; see **OFST** displayed, followed by a flashing **L\_\_**; enter **10** inches as the **Offset or End of the Bubbler Pipe** from the bottom of the tank.
- 3 Press SELECT; see **P\_\_**; enter **90** inches as the **Upper Limit in Display Window**.
- 4 Press SELECT; see **P\_\_**; enter **10** inches as the **Lower Limit in the Display Window**.
- 5 Press SELECT; see **P\_\_**; enter **75** inches as the **High Level Alarm/Fault** level.
- 6 Press SELECT; see **P\_\_**; enter **65** inches as the **Make-Up OFF** point, the highest level in the operating range.
- 7 Press SELECT; see **P\_\_**; enter **40** inches as the **Make-Up ON** point, the lowest level in the operating range.
- 8 Press SELECT; see **P\_\_**; enter **25** inches as the **Low Level Alarm/Fault** level.



Press the **ESC** button after you have entered all of the set points. You're finished, and will return to operating mode.

DistaView® Corp.  
Bowling Green, OH  
(800) 795-9970  
(419) 354-5087  
fax (419) 353-6080  
www.Distaview.com  
e-mail: sales@distaview.com